

# PCS e-Detective

## Internet Surveillance and Content Auditing

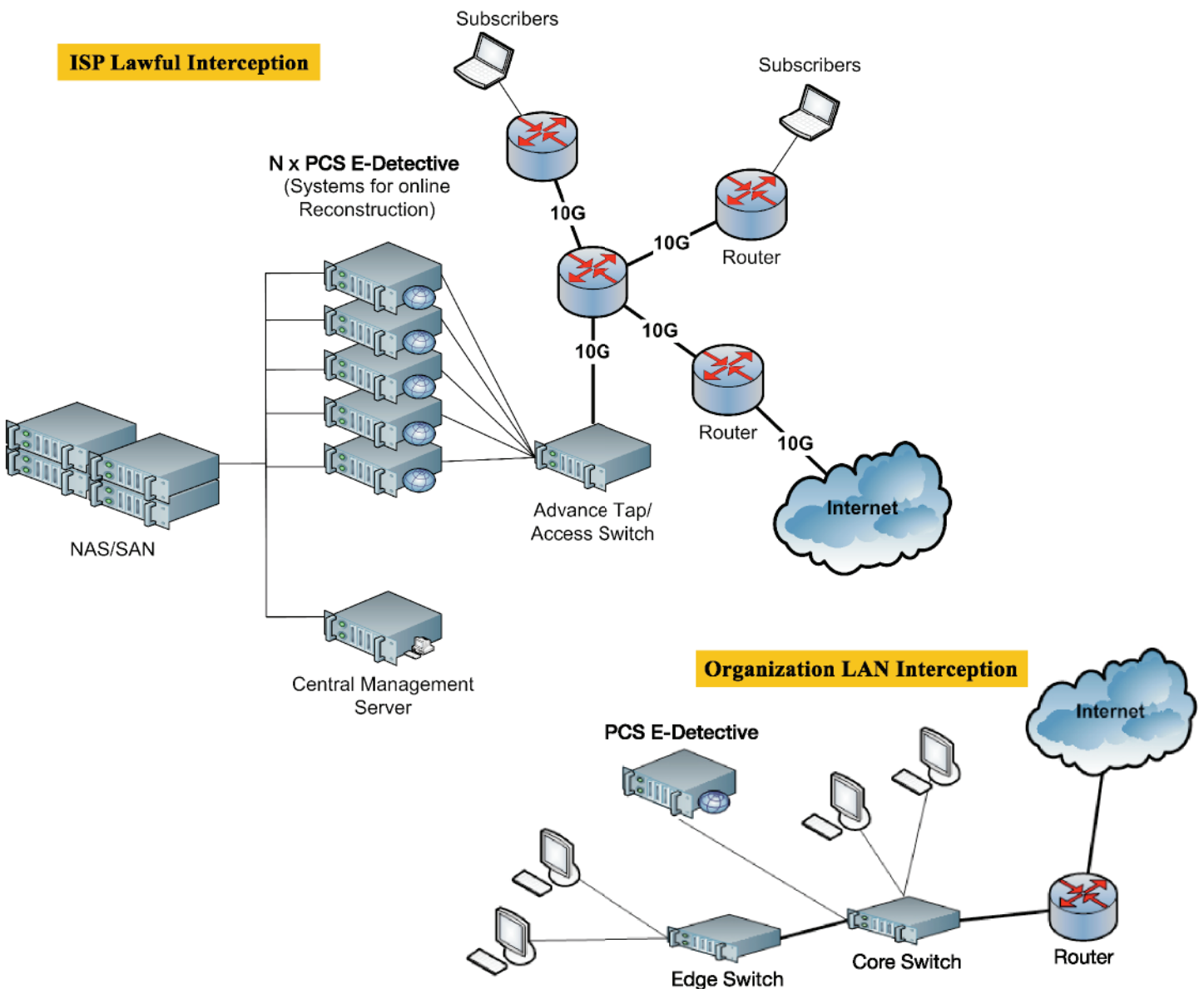
In most businesses today, Internet has become part of the critical infrastructure of most companies. Without providing Internet connection, employee's daily work and productivity can be greatly impeded, resulting in the lost of sales or timely decisions. Nevertheless, with the adoption of the Internet, other concerns such as data leakage and employees attending to personal matters over the Internet have become growing concerns for many companies.

Although corporate policies could contain clauses relating to misuse of Internet, enforcement continues to delude administrators in most organisations since they are unable to effectively identify and block out unnecessary traffic. With Web

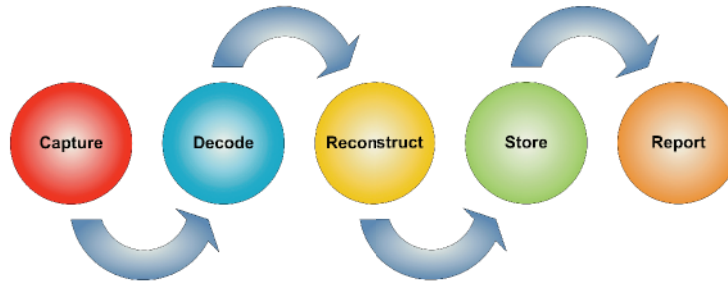
2.0 on the rise, social networking applications and web sites may even pose a greater threat to organisations as their employees may become the prime targets of social engineering.

PCS E-Detective provides the means to protect an organisation through Internet Surveillance and Content Auditing on its network traffic. PCS E-Detective's basic function is to capture all Internet data transacted through the network. The captured raw data will be decoded and reconstructed, before it is presented in the web management interface. This will allow the security administrator to ascertain if policies have been adhered to or if the proposed configuration have been followed through.

## PCS e-Detective Implementation Scenarios



# PCS e-Detective System Flow







## Specifications and Features

<b>Supporting Throughput/ Load</b>	Up to 600 Mbps
<b>Supporting Corporation Size</b>	Very Scalable, > 6000 online users
<b>Appliance Based</b>	Yes
<b>Deployment</b>	Mirror Mode, Bridge Mode, Sniffer Mode, Double Layer Architecture

<b>Services/ Protocols</b>	Email	POP3, SMTP, IMAP
	Webmail (Read and Sent)	Yahoo (Standard and Beta versions), Gmail ( newer and older versions), Windows Live Hotmail, Hinet, PCHome, URL, Giga, Yam, Sina, Seednet, mail.tom.com, mail.163.com, Sohu.com
	Instant Messenger/ Chat	Yahoo, Windows Live Messenger (MSN), ICQ, AOL, QQ, UT Chat Room, Google Talk IRC, Skype VOIP Log – includes File Transfer through IM in some supported protocols
	HTTP	HTTP Link (URL), HTTP Content, HTTP Reconstruct, HTTP Upload/ Download
	FTP	FTP Upload/ Download
	P2P	P2P Details Log – Bit torrent, eMule/ eDonkey etc
	Online Game	60++ Online Games
	Telnet/ BBS	With playback
	VOIP	Yahoo Messenger VOIP
	Webcam	MSN Messenger, Yahoo Messenger Webcam
<b>Management</b>	System Access	HTTPs Remote Monitoring
	Group/ User	Yes
	Data Backup	Yes, Restore Server, NAS/ S AN based FTP server etc.
	Web Browser Access	Yes (using IE, Mozilla etc.)
	Data Mining and Search	Yes (Search by Parameters, Search by Keywords), Similar search function, User Account Relationship tracing
	Alert/ Notification	Yes. Alert/ Notification by parameters, by Keywords
	Throughput Alert	Yes
	Station Management	Yes (NetBIOS, Active Directory info)
	Storage Management Upgrade	Yes Web based Upgrade
<b>Reporting</b>	Reports	Yes. Comprehensive reporting. Total throughput statistical report with op-down view. Per user reporting with top-down view
	Schedule Reporting	Yes. Provide daily log report in Excel format

## PCS e-Detective Models

Model	ED-FX06 	ED-FX30 	ED-FX100 	ED-FX120 
<b>Online IP</b>	0-40	41-200	201-1000	Above 1000
<b>HDD Size</b>	80G	160G	120G – 300G customizable	120 G – 300G customizable

Note: All models support external storage solutions, such as SAN or NAS, for additional storage requirements.